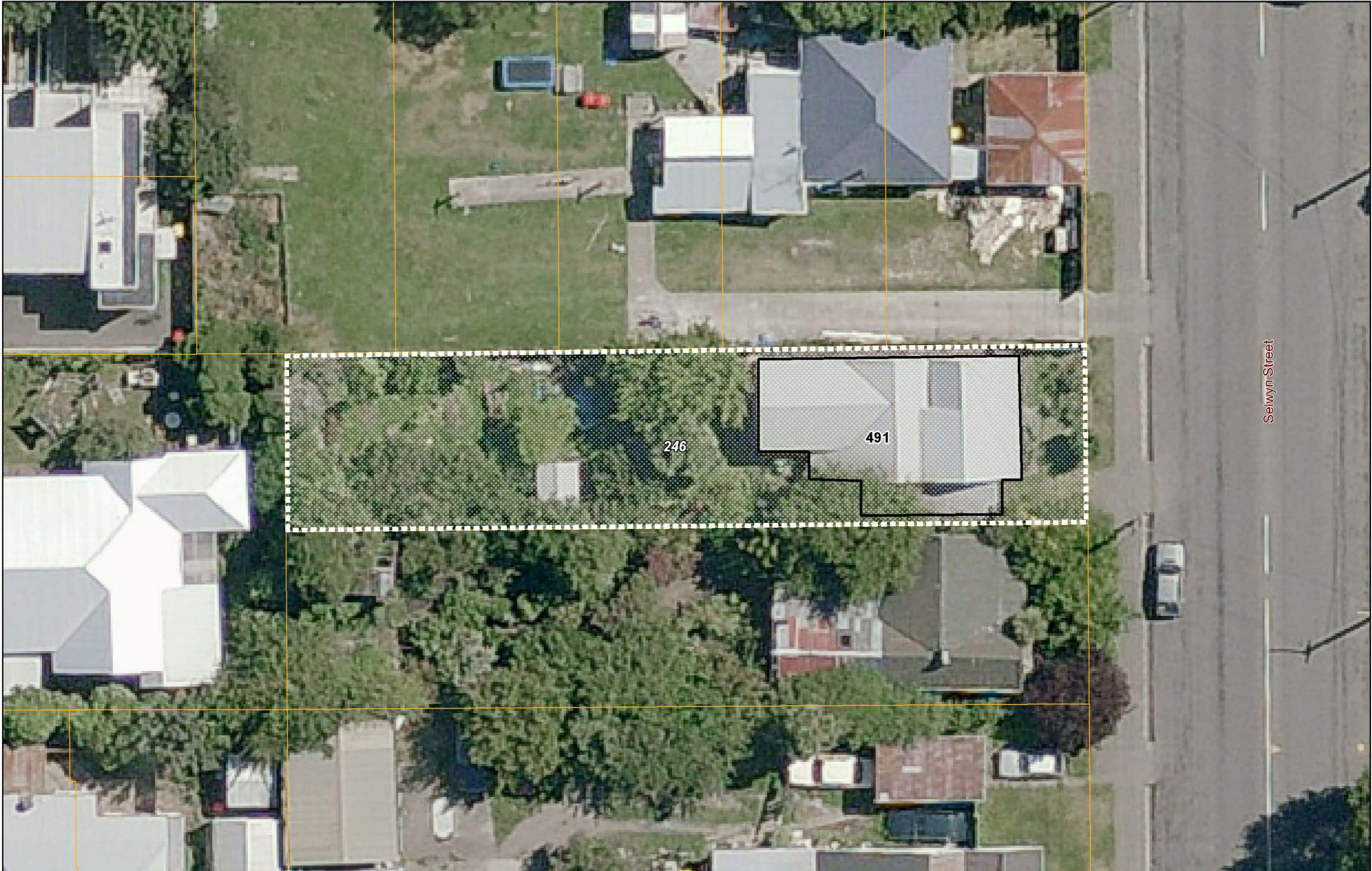


Heritage Items and Settings Aerial Map

Aerial Map Reference: 97
Heritage Item Number: 491
Heritage Setting Number: 246



Heritage Item and Setting boundaries are a visual reference only as they have been captured against specific sets of aerial photography. The outer boundary of the setting is deemed to follow:
a) the specific measurement(s) or description of the setting boundary where they are included on the aerial map; or if not specified, then;
b) the cadastral boundary at the nearest point to the setting boundary shown on the aerial maps
The boundaries should only be referred to in relation to these specific photos, not survey information or building plans. There may be a visual distortion due to the angle of the aerial photography. District Plan rules do not apply for overlays extending into the Coastal Marine Area. The Coastal Marine Area is as defined in the Resource Management Act.

 Heritage Item
 Heritage Setting



Scale 1 : 194
Aerial photography captured in 2010
Published On: 30/10/2017